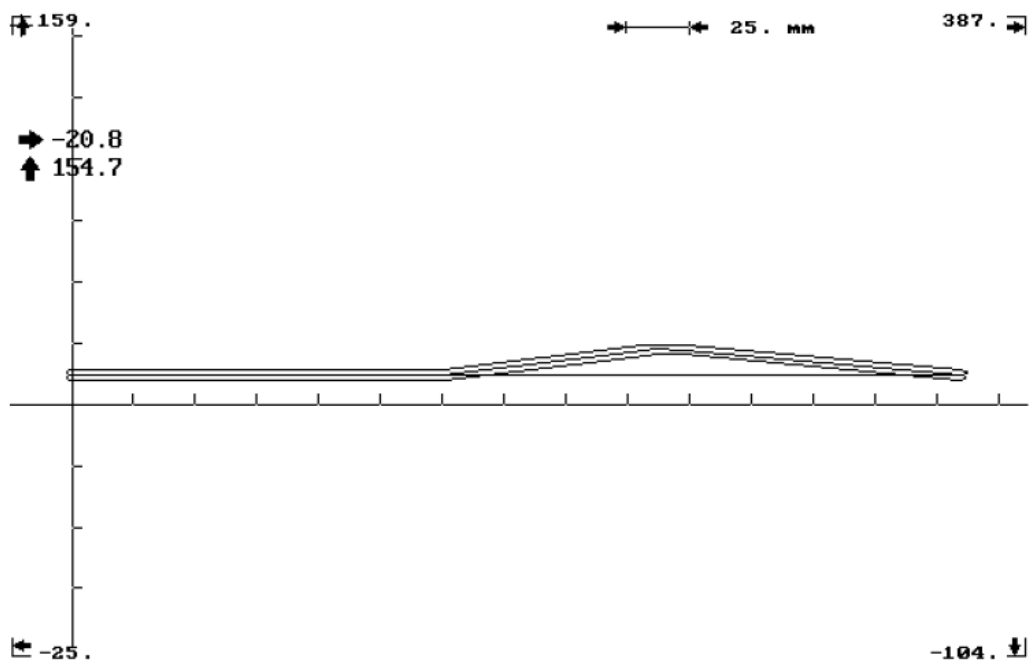
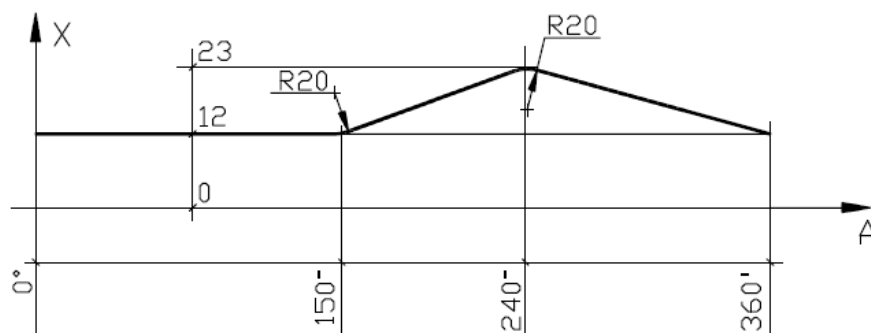
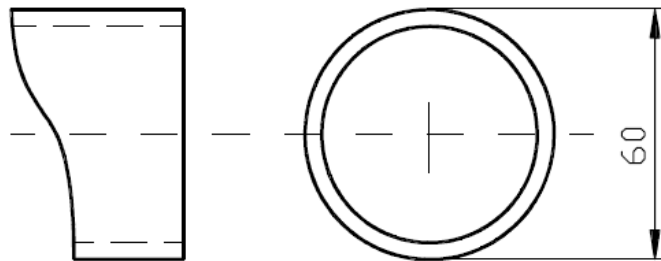


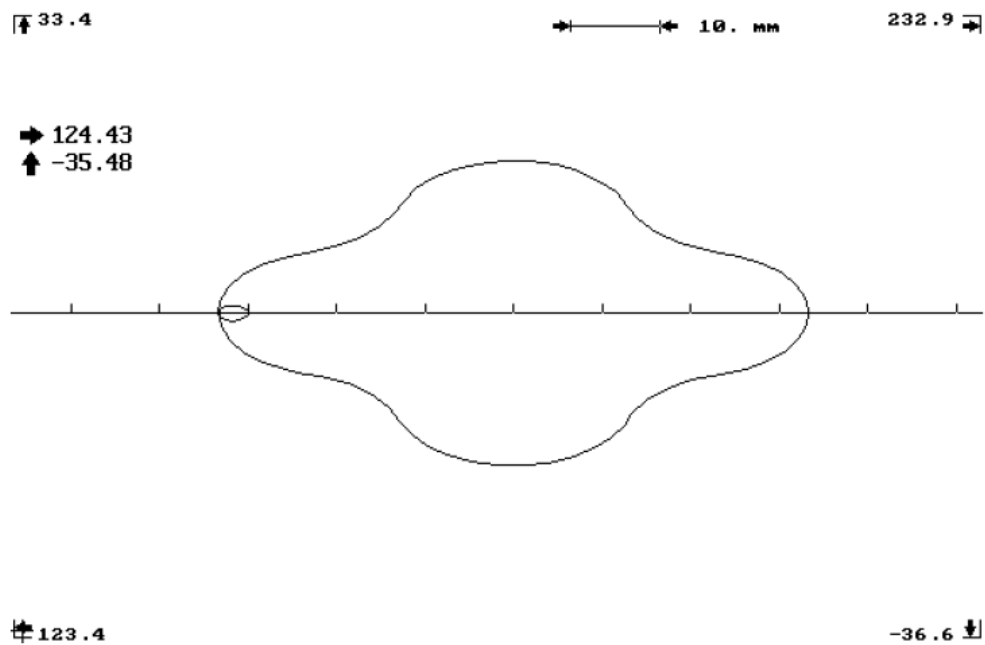
3.4 PROGRAMMAZIONE CILINDRICA

Profilo aperto (camma)



N1 [PROFILO APERTO (CAMMA)
N2 [cilindro di raggio 30, fresa diametro 6
N3 [per realizzare una sede di 8 mm
N4 [tre passate, una centrale, una distante +1, una di -1
N5 O1
N6 T2 M6 [fresa d=6
N7 F3500S1000M13
N8 G17AXZ
N9 G49I0
N10 L1
N11 G49I-1
N12 L1
N13 G49I1
N14 L1
N15 Z30R
N16 M30
N17 L=1
N18 Z10R
N19 X12A0R
N20 Z2R
N21 Z-4
N22 G201J30
N23 G41K2
N24 G10X12A0
N25 G11A150
N26 G11X23A240
N27 G21I-20
N28 G11X12A360
N29 G40X12A360K2
N30 G200
N31 Z10R
N32 X12A0R
N33 G32

Profilo chiuso



- N1 [PROFILO CHIUSO
- N2 [cilindro di raggio 30
- N3 O1
- N4 T3 M6
- N5 F400S1200M13
- N6 G49I3
- N7 G17AXZ
- N8 G201J30
- N9 X0A150
- N10 Z2R
- N11 Z-2
- N12 G42K2
- N13 G20X0A160I-10
- N14 G21I5
- N15 G20X10A180I-10
- N16 G21
- N17 G20X0A200I-10
- N18 G21
- N19 G20X-10A180I-10
- N20 G21
- N21 G20X0A160I-10
- N22 G40X0A150K2
- N23 G200
- N24 Z20R
- N25 M30